

SLP OPTIONS FOR
1999 CAMARO SS



Camaro SS shown with SLP's optional chrome wheels and Performance Exhaust with dual-dual outlets.

SLP ENGINEERING OPTIONS

1999 CAMARO[®] SS



ALL SLP OPTIONS REQUIRE GM OPTION CODE Y2Y

• SLP'S HIGH PERFORMANCE EXHAUST SYSTEM

Helps boost the LS1, 5.7 liter, V8 engine to 327 horsepower. But that isn't the whole story, SLP's exhaust system features twin-dual tips, which translates into improved performance, a more aggressive exhaust note and enhanced appearance.



• SS DASH PLAQUE AND KEY FOB

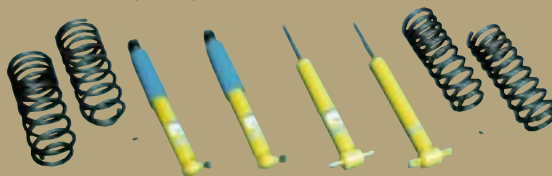
For the final touch of distinction, SLP offers a high quality set of Camaro SS key fobs and interior dash plaque.



• BILSTEIN ULTRA PERFORMANCE SUSPENSION SYSTEM

Enhances vehicle handling and dynamics in the following ways:

- (1) The optional Bilstein Performance Suspension is designed for superb transient response;
- (2) It is tuned for maximum handling under track conditions;
- (3) System is remarkably compliant; and is
- (4) Free of the ride harshness normally associated with sport handling packages.



• AUBURN HIGH TORQUE DIFFERENTIAL

Engineered for spirited driving, especially under controlled conditions at a race track. The Auburn differential's impressive grip is further enhanced by the cooling properties of its unique aluminum axle cover, which also improves durability and performance.



• SS CAR COVER

Premium grade, breathable, water-resistant fabric. Provides protection from the elements for today's hottest collectible car. Includes: cable, lock, tote bag with silk-screened Camaro SS graphics.

• SS FRONT FLOOR MATS

Heavy-duty, custom fitted carpeting with aggressive nubs to hold mats firmly in place.



• 17" x 9" CHROME-PLATED SS WHEELS

SLP offers a lightweight, chrome-plated wheel for 1999 that includes a 3-year/36,000 mile limited warranty on the chrome finish. Wheel center-cap design features "SS" logo.



• Performance and Exclusivity

With up to 327 available horsepower, SLP's version of the ultimate Camaro SS is well, the ultimate. Since only a limited number of 1999 SS's will be built, don't delay in ordering yours.

• Head Turning Quotient

See for yourself why Camaro SS sets the standard for modern muscle. Who ever thought that an aggressive hood and rear spoiler, along with options like 17" chrome wheels and a dual dual exhaust would cause such a sensation. We did.

• Quality Commitment

Every 1999 Camaro SS receives SLP-produced components that are warranted for three years/36,000 miles. SLP believes Camaro SS is destined to be the collectible muscle car of the 1990's; and we build every vehicle with that thought in mind.



CASTROL "SYNTEC" HIGH PERFORMANCE LUBRICANTS PACKAGE

Castrol "Syntec" full synthetic engine oil provides superior protection and performance. This lubricants package includes Castrol's 500,000-mile "Maximum Protection" Limited Warranty Program.



Don't forget, SLP supplies content on every 1999 Camaro SS. That content includes a functional hood with scoop; a forced air induction system; and deck lid spoiler. Doesn't it make sense to enhance the collectibility of your investment with other SLP-produced products? In 1997, only 1.2% of Camaro SS orders did not include one or more of the above performance, handling and appearance options. Like in the past, SLP provides a **3 Year/36,000 mile limited warranty** on its content.

Contact your Chevrolet dealer for details or simply contact SLP at **(248)288-3066**, Monday through Friday, 8 a.m. to 6 p.m. To ensure that SLP factory-installed options are added to your SS, RPO code Y2Y must be added to the order. **Once Camaro SS orders are scheduled for production by Chevrolet and GM, RPO code Y2Y can not be added to the order.**

SLP reserves the right to make changes at any time, without notice, in prices, colors, materials, equipment specifications, models and availability. Some information may have been updated since time of printing, so please check with your dealer or SLP for details.

Contact SLP at <http://slpeng.com> on the Internet.